

# PPWG NEWSLETTER

Pikes Peak Weavers Guild  
PO Box 8104, Colorado Spring, CO 80933-8104  
[www.pikespeakweavers.org](http://www.pikespeakweavers.org) [PPWGuild@aol.com](mailto:PPWGuild@aol.com)



## INSIDE THIS ISSUE

Notes from Your President	8
Guild Members in the News	11
Oct Program	1
October Weaving Sample	2
September Spinning Sample	3
Library Update	3
Shimmering Colors	1
Minutes	8
Program Schedule	10
Classifieds	10

## October Program

By Carol Wilkinson

### SHIMMERING COLORS: THE MAGIC OF IRIDESCENCE -- Bobbie Irwin, Presenter

Bobbie Irwin has been weaving for almost 35 years and teaching for guilds and conferences since 1985. She is the author of two books, *Twined Rag Rugs* and *The Spinner's Companion*, has had dozens of articles published in textile and craft magazines in three countries, and has worked with Interweave Press since 1987 as a Contributing Editor to *Handwoven* and *Spin-Off*, as well as assisting with *PieceWork* and *FiberArts*.

With a background in science, Bobbie especially enjoys textile research and playing "what if?" games on her looms and wheels. Iridescence is the most recent of her in-depth studies. Her article in *Handwoven* (January 2004, "The Magic of Iridescence") is one of very few articles about the subject ever to appear in a textile journal. She is preparing two sequel articles and will show some of her samples for those in class.

Bobbie lives in Montrose, Colorado, and is a member of the San Juan Weavers Guild. She is a former member of the Northern Colorado Weavers' Guild and the Handweavers' Guild of Boulder.

### SHIMMERING COLORS: THE MAGIC OF IRIDESCENCE WORKSHOP

**October 13, 2007**--Saturday Workshop with Bobbie Irwin. 8 a.m. -- 5 p.m. at the Penrose House

Please note that the final \$30 of the workshop fee is due by the September 14, 2007 PPWG meeting.

Panera Bread will be providing lunch that day, and you can select from their menu at the meeting. Bobbie Irwin will be sending the yarns to be used for the warps at the workshop, and I will be distributing them to registrants early in September.

Carol Wilkinson  
719-576-4530  
[LCWILKIN@MSN.COM](mailto:LCWILKIN@MSN.COM)

## October Weaving Sample

*By Deb Lane*

Weave Structure: Crackle  
Warp: 10/2 Tencel; 26 epi  
Weft: 8/2 Tencel; 21 ppi

Summertime is almost at an end and I wanted to weave something fun!

A favorite weave structure – crackle, was the beginning of this project. As I have been weaving this summer (my studio looks out onto Colorado Avenue and lots of people stroll by); I noticed pink seems to be quite popular this year, so pink was the color to start with.

I pulled cones of tencel off my shelves and played with color combinations. I wanted something relatively simple but also wanted it to look complicated. This threading pattern and the color arrangement, I believe, satisfy this desire.

The main warp color is 10/2 mauve (light pink). To add some interest, I added 10/2 gray mauve (a darker pink) and added some 8/2 variegated (which included purple, plum and some green). Then I threw in a solid 8/2 light green (Mineral Green) for just the tinniest bit of pizzazz. I put on a long narrow warp and wove scarves.

I used 10/2 mauve in the weft for the first scarf (it was “okay”); I used the 10/2 gray mauve in the weft for the second scarf (a bit better); then I used 8/2 eggplant in the last scarf and for the newsletter samples.

*See draft: page 7*

*Have an interesting article  
for our November  
Newsletter?  
Send an electronic copy to:  
[PPWGuild@aol.com](mailto:PPWGuild@aol.com)  
By 20 October 2007*

I think the eggplant is by far my favorite. Unfortunately, the sample you see doesn't do the weave structure justice.

Many thanks to Karen Courier (who helped me find the proper sett – I was still a bit too focused on rep weave!); Susan Bowman (who helped me learn sectional warping and gave awesome, not-to-be-forgotten hints and tips); to Peggy Bowman (for answering my questions re warping with a Trapeze); and especially to Lynne Lovett who, too, has an AVL warping wheel and was able to steer me in the right direction for its proper use. You guys rock! Without their assistance and insight, I shudder to think of how this would have turned out!



## PPWG Library News

By Beverly Weaver

Special thanks go to Becky Chapin for donating *All About Angora Goats and Mohair*, by E. Dean Edwards, which can be found in with the spinning books.

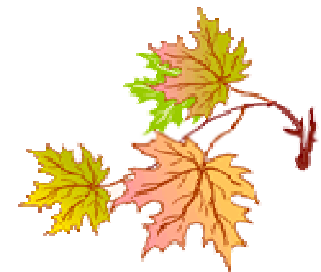
The library inventory was completed during the summer, and a list of all materials will be posted on the web site and printed on paper for display in the library. Our library has an amazing assortment of magazines, books and samples and is a great asset to our members.

The following items were listed in our inventory, but we do not have the book or a card in the 'check out' box. If all members will search their shelves to see if they might have one of these books, it would be appreciated.

- Alderman, Sharon D., *Mastering Weave Structures*
- Davenport, Betty Linn, *Hands on Rigid Heddle Weaving*
- Inouye, Bonnie, *Exploring Multishaft Design*
- Khmeleva, Galina, *The Gossamer Webs Design Collection: Three Orenburg Shawls to Knit*
- Van der Hoogt, Madelyn, *Handwoven's Design Collection #18*

## In Memoriam: *Margaret Rex*

Margaret was a beginning weaver, having taken a beginning weaving class offered by Green Valley Weavers about a year and-a-half ago. She attended numerous guild meetings and was an active participant in the Beginning Weavers Study Group. Margaret always had a kind word and a smile for everyone. She opened up her home as a meeting place for the Beginning Weavers Study Group shortly after its inception. Those of us who knew and loved her will miss Margaret greatly.



## October Spinning Sample

By Helene Charles

The yarn is a two ply yarn from Cormo cross which I got from another shepherdess in Arizona where we are from. After setting it, I hand painted it using kool-aid dye (berry blue, cherry, iced blue, punch and black cherry). A little footnote: I entered it for the open class in the Teller County fair and won first place (blue ribbon).



**Hospitality Volunteers for Oct**  
Linda Shaffer, Edna Devai, Jan Seltman

## Fabulous Fiber II Featuring Handpainted Warps, Skeins, Roving, and Rags

DATE: October 20, 2007

TIME: 3:00 TO 7:00 pm PM

LOCATION: Judi Arndt's

REFRESHMENTS: Food, Beer, Wine, and Soft Drink

SILENT AUCTION: Ribari Hand Embroidered  
Textiles These are donated items

TICKETS: \$10 in advance, \$15.00 at door  
and will be available at Sept. meeting

Focus will be on yarn and some scarves (from last event). If any one is interested in donating other yarns for a WHITE ELEPHANT table they will be accepted gladly.

For more information and directions contact:  
[judiarndt@msn.com](mailto:judiarndt@msn.com)



2115 W. Colorado Avenue • Colorado Springs, CO 80904  
719.448.9963 • 800.457.8559

Visit our website for  
information on our  
study groups and classes.

Books  
Dyes  
Fiber  
Knitting Needles  
Looms  
Spinning Wheels  
Yarns

Open Mon - Sat

*Weaving*  
*Knitting*  
*Spinning*  
*Dyeing*  
*Crochet*

[info@greenvalleyweavers.com](mailto:info@greenvalleyweavers.com) • [www.greenvalleyweavers.com](http://www.greenvalleyweavers.com)

### Juried Exhibition Deadline

Last Day to Postmark Entry Form:

**December 15, 2007**

### Living with Beauty: Handwoven Textiles for the Home

Digital or Slide Images Accepted

\$4000 in Awards from

Pikes Peak Weavers Guild

And awards from

Handweavers Guild of America, American

Tapestry Alliance,

Surface Design Association, Complex Weavers  
and *Handwoven*

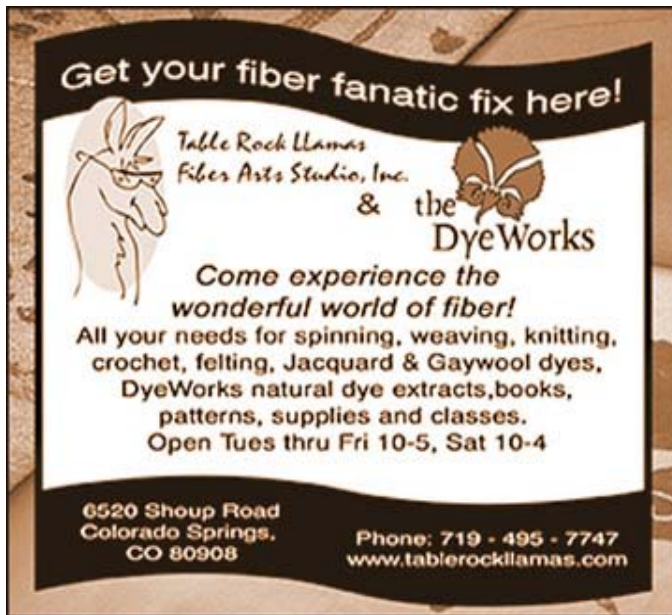
Prospectus & more info at  
[www.pikespeakweavers.org](http://www.pikespeakweavers.org)

## Thank You

A big thank you goes to Bengt and Siv Nelson for the WeaveDesign Software, downloadable from the PPWG web site!

Donations continue to be received along with very positive comments about using it.

Bengt, husband of PPWG member Siv, created this software and allowed it to be posted on the PPWG web site. They requested that if the user downloads and likes the software, then a donation to PPWG (a nonprofit organization) to help defray server rental costs would be appreciated. Thank you again, Bengt and Siv!



## Rocky Mountain Weavers Guild Annual Fiber Art Sale

All fiber artists are invited to participate in the Rocky Mountain Weavers Guild Annual Fiber Art Sale.

You must be a member of RMWG by October 1 to be in this year's sale. The details about joining RMWG and participating in our Annual Sale are on the website: [www.rmweaversguild.org](http://www.rmweaversguild.org) or contact:

Shelly DeChantal: 303-759-9505 or [krantzdech@earthlink.net](mailto:krantzdech@earthlink.net).

**Sale Dates:** October 25-27.

Englewood Civic Center, 1000 Englewood Pkwy, Englewood, CO. Hours: Thurs. 5-8p, Fri. 10-8p, Sat. 10-5p. Map: [www.rmweaversguild.org](http://www.rmweaversguild.org)

## ALTERNATIVE GIFT FAIR Broadmoor Community Church OCTOBER 27, 2007

The Alternative Gift Fair will be held at the Broadmoor Community Church

315 Lake Ave., Colorado Springs, CO,  
Saturday, October 27, 2007  
9:30 a.m. until 4:30 p.m.

Several non-profit organizations helping to alleviate hunger, poverty and disease in third-world countries and here in the U.S. will be selling unique gift, clothing and craft items to the public.

The Fair's mission is twofold:

- to educate and raise the community's awareness of the work done by our local, national and international charitable organizations; and
- to provide an opportunity for the public to purchase gifts sold by and for the benefit of these organizations. 100% of the sales will be returned to the participating organizations.



Items from places such as Ethiopia, El Salvador, Peru, Vietnam, India, Guatemala, Haiti, South Africa and closer to home, Colorado, will be for sale. This unusual benefit may be the first of its kind to be held in Colorado Springs.

Directions to the Fair: Take Interstate 25 to Exit 138 at Circle Drive. Drive west on Circle Dr. (which becomes Lake Ave.) for 1.8 miles. The Church is on your left just past The Bank at Broadmoor.

Contact person: Carol Wilkinson (719) 576-4530

## December Stash Sale

Bring your unwanted but usable yarns, tools to the December meeting. The sale benefits our Guild. Please price your items. "One weavers junk is another's treasure."

## Colorado Tea Basket

Basket maker Linda Lugenbill will be the speaker at our February meeting and in the afternoon will conduct a workshop where we will be making a "Colorado Tea Basket" just in time for Valentine's Day. In her own words: "Continuous weaving will be accented with twining and ti-twining to create a small splintwork basket suitable for storing tea packets. Reed, assorted types of cordage and other "naturals" will provide color and texture to this project which is topped with a "folded" rim."

The cost of the workshop is \$28 this includes all materials ready for use and a pattern.

Take out lunch is available. Lunch menu includes:

Turkey wrap w. whole wheat and pimento cheese bread, butter, Soup (French onion or split pea) or salad, Pound cake. (\$12.00)

Soup (French onion or split pea) and salad, dressing on the side, Whole wheat and pimento cheese bread, butter, Pound cake. (\$11.00)

The workshop is open for the first 15 participants. Reserve your place by signing up at the October meeting with \$15. Lunch money and the second installment will be due at the January meeting.

If you have any questions please contact:  
edna\_joseph\_devai@msn.com or  
303-681-0300.

## Reminder

It is time to start looking for recipes for the South of the Border potluck in December!



8-Shaft Crackle woven by Deb Lane



## Notes from Your President

By: Linda Shaffer

After the September meeting, which always seems a little hectic because it is the first meeting of the year, I have been thinking of ways to improve the business meeting. We all need to know what is going on with the guild, ask questions, and bring up new business. The most important parts of the meeting to me are to have interesting programs, to have time to look at the Show and Tell, to use the library, and to have time to visit with other weavers. I want to keep the meetings short and within the time frame allotted so everyone has time for the fun things and so our programs begin on time.

To keep things concise and organized, I am asking people to contact me before the meeting (684-2212 or [lindalshaffer@msn.com](mailto:lindalshaffer@msn.com)) if they want to

be on the agenda and to estimate how much time is needed. This way, I can know how to allocate the time, keep to our schedule and table items for a future meetings if necessary.

I also encourage everyone to include their information in our newsletter so people have a chance to digest things and then can ask any questions at the meeting. I am expecting a big crowd at the October meeting for Bobbie Irwin's program and I am also excited about her workshop on Saturday. I took her workshop "More with four: Unusual 4-Shaft Weaves" at Intermountain Weavers Conference. She is an excellent presenter with much to share and she also creates a very relaxed, stress free environment for weaving.

Classes forming now!

Specializing in designer couture and fine natural fiber fashion fabrics, including silks, cashmeres, wools, linens, and embellished fabrics.

textile-O-phile  
*delicious fabrics*

1709 South Eighth Street  
Broadmarket Square  
Colorado Springs, CO 80906

719-473-1818  
[www.textileophile.com](http://www.textileophile.com)  
[dc@textileophile.com](mailto:dc@textileophile.com)

## MINUTES

### September 14, 2007 Board Meeting Minutes

The PPWG Board Meeting was called to order at 8:40 am by Linda Shaffer. Attending were Edna Devai-Alth, Barb Byerly, Jane Rock Costanza, Jan Sinn, Karen Currier, Catie Kiley, WW Walker, and Susan Bowman. Brief reports were given on programs, the electronic newsletter, web site, workshop, juried exhibit, dues payment, and hospitality needs. WW Walker and Jane Rock Costanza reported completion of the annual audit of the books, finding no discrepancies. A report was submitted to Barb. A decision was made by the board that a "stash sale" with all proceeds benefiting PPWG would be announced at the October meeting, with the sale happening at the December meeting. Guild members have been requesting a way to donate unused yarn, books, and equipment.

### September 14, 2007 Meeting Minutes

The PPWG meeting was called to order at 9:35 am by Linda Shaffer. Minutes from the May meeting were approved. Kudos for awards and exhibits were celebrated. Reports were given by officers and committee chairpersons, notably: Treasurer's summary, completion of the library inventory, Becky Chapin's donation of a book on Angora Goats, newsletter inputs now go to Jane Rock Costanza, \$125 (without materials) is the estimated cost of the Betsy Blumenthal workshop on March 11-13 2008, status of advertisers, web re-design to match newsletter will begin shortly, upcoming December demonstration at the Pioneers Museum, one-day workshop with Bobbie Irwin on Iridescence, the juried exhibit Living with Beauty, Fabulous Fiber II fundraiser and need for some volunteers to work that day, guild exhibit at the Commonwheel Artists Co-Op and help needed, and completion of the annual audit of the books, with no discrepancies found. Special thanks were given to Louise Conner for all the work relating to publicity of PPWG's events. JoAnn Vourtiritsa from the HGP announced that they would be hosting Colorado Weavers Day on May 2, 2008. Heather Hubbard led the challenge exchange, which was followed by Show & Tell. The meeting was adjourned at 10:45 am.

Submitted by Susan Bowman

### **Treasurer's Report**

Submitted by Barb Byerley

BALANCE FORWARD – 8/8/07 ---- \$16,609.04

Total Income \$1,020.00

Total Expenses \$965.00

CLOSING BALANCE – 9/13/07 ---- \$17,574.04

MEMORIAL INVESTMENT: Vanguard Prime Money Market Fund – 6/29/07 \$4241.30

## 2007 – 2008 PPWG Meeting and Program Schedule

Board Meeting begins at 8:30 Business Meeting begins at

All programs begin immediately following the PPWG business meeting

14 Sep 2007	Navajo Weaving	Bonnie Julsen
12 Oct 2007	Shimmering Colors: The Magic of Iridescence	Bobbie Irwin
13 Oct 2007	Saturday Workshop: The Magic of Iridescence	Bobbie Irwin
09 Nov 2007	Taking Digital Photographs of Your Weavings	Jane Rock Costanza
14 Dec 2007	South of the Border Potluck What's New In Fiber & Products. Stash Sale!	Kathleen Orr
11 Jan 2008	Hill Tribe Costume from Laos, Viet Nam and China	Judi Arndt
08 Feb 2008	The Basket Scene German Style Afternoon Workshop: Colorado Tea Basket	Linda G. Lugenbill
14 Mar 2008	Twill Weave from Plain to Fancy	Betsy Blumenthal
11 Apr 2008	Guatemalan Women and Their Weaving	Carol Wilkinson Judi Arndt
09 May 2008	Celebrate! Luncheon. Opening of the Coverlet Exhibit	Debbi Holdeman

## Classified Ads

### For Sale

\$1500. 24-shaft Woolhouse table loom w/table. 23.5-inch weaving width. Overhead beater. Sectional second warp beam. Damask extension. Raddle. 1200+ Teksolv heddles. Doreen (719) 481-4303.

\$1200. 12-shaft LeClerc Nilart floor loom. 38-inch weaving width. Floor beater. New aprons and treadle strings. 1200+ metal heddles. Doreen (719) 481-4303.

\$200. Metal Navajo loom, warped for first project. 37-inches wide by 50-inches high weaving area. Video tape and book on Navajo weaving. Doreen (719) 481-4303.

\$100. LeClerc 38-inch bench with center closed storage space and two open storage spaces on either side. Doreen (719) 481-4303.

**Knitter's Kove**

**SUPPLIES & CLASSES**

**Knitting  
Crochet  
Spinning**

**Knitting Groups**  
Wed: 10 -Noon  
Sat: 3-5 pm

**Open: M,W,Th, F 10-5:30  
Tu 10-8, Sat 10-5**

**1817-F N. Union  
Colorado Springs, CO  
719.633.8008**

## Using Painted Warps

By Heather Hubbard

Painted warps can produce quite dramatic finished textiles. Warp dyed with a variety of colors can be exciting to look at. There are a number of ways to use a painted warp in weaving. The following are a few ideas.

A single painted warp can be used as the only warp yarn in the textile. This can make a very nice textile by itself. However, when winding the warp onto the loom, sections of the warp can be passed over varying heights of a frame to cause a classic Ikat shifted motif, for example a chevron, to form in the painted warp.

A warp can be wound into multiple warp chains before they are simultaneously painted. These separately wound warps can be reversed and threaded in stripes for the textile. This will give subtly defined edges to the striped effect. See below for stronger edge definition.

Multiple warp chains can be painted in different color ways. These different color ways can be threaded as interleaving stripes. Many books contain suggestions for stripe sizes.

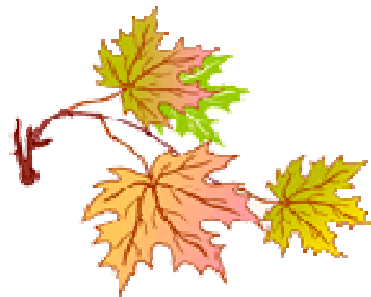
Additional single or double yarns of contrasting color (navy or black are commonly used) can be added to the outside edges of warp painted stripes to create emphases or definition of stripe edges. And/or add numerous yarns to create solid colored stripes between the painted warp stripes. An entire contrasting warp can be threaded with the painted warp as double weave or other structural threadings.

Be forewarned: you should preshrink any additional yarns to match the shrinkage which the dyed yarns have experienced. Cotton and rayon yarns will have experienced the equivalent of cold water wash. Wool and silk yarns will have experienced the equivalent of hot water soak (don't agitate these yarns, and with silk don't get the water overly hot or risk damage to the silk).

When specific weave structures are applied to a painted warp visual changes can occur. A damask satin or twill structure, for example can cause the warp colors to appear and disappear alternating with the weft.

Wefts of contrasting or blending colors can cause the edges of the warp faced blocks to appear and disappear in the textile, creating visual hard or soft edges to the blocks. For example, if there is red in the painted warp, using a red weft will cause the red in the warp to recede or seemingly "disappear", whereas a navy or black weft will cause the red in the warp to show more or come forward.

However you use them, painted warps always have great impact for the finished cloth.



## PPWG Members in the News

**Congratulations to the Winners of PPWG Award Money at the 2007 Colorado State Fair!**

<b>Hallie Greer</b>	Guffey, CO	Best Handspun Yarn
<b>Deborah Lane</b>	Colorado Springs, CO	Best Handwoven
<b>Carol Wilkinson</b>	Colorado Springs, CO	Best Functional House Furnishing
<b>Bonnie Julsen</b>	Westcliffe, CO	Best Fiber Art

# PIKES PEAK WEAVERS GUILD MEMBERSHIP REGISTRATION

Please note: Membership dues shall be payable on or before June 1. To be included in the PPWG Directory, dues and forms must be received by the Membership Secretary by at the regular PPWG September meeting.

PLEASE PRINT LEGIBLY

Name \_\_\_\_\_

New \_\_\_\_\_ Renew \_\_\_\_\_ Lifetime \_\_\_\_\_

If YOU ARE A RENEWING MEMBER AND YOU WERE LISTED IN THE PREVIOUS DIRECTORY, PLEASE ENTER ONLY AMOUNTS PAID AND ANY CHANGES IN YOUR INFORMATION.

- \_\_\_\_\_ \$ 25.00 Regular membership June-May (\$12.50 new members January-June)
- \_\_\_\_\_ Lifetime Membership (grandfathered members only)
- \_\_\_\_\_ \$ 10.00 Artist Gallery Page (PPWG web site)
- \_\_\_\_\_ \$ 1.00 Directory Mailing Fee (Directory may be picked up at the October meeting)
- \_\_\_\_\_ \$ 15.00 To have newsletter mailed (Newsletters are now published electronically)
- \_\_\_\_\_ \$ Donation to the guild

\_\_\_\_\_ \$ Total

Please make check payable to PPWG.  
Send to: PPWG, P.O. Box 8104, Colorado Springs, CO 80933

E-mail \_\_\_\_\_

Address \_\_\_\_\_

City \_\_\_\_\_ State \_\_\_\_\_ Zip+4 \_\_\_\_\_ + \_\_\_\_\_

Phone: Home ( \_\_\_\_\_ ) \_\_\_\_\_ Work ( \_\_\_\_\_ ) \_\_\_\_\_

EQUIPMENT INFORMATION FOR DIRECTORY

**LOOMS**

Number shafts	Type (Jack, Countermarch, etc.)	Manufacturer

**SPINNING & OTHER FIBER EQUIPMENT**

Manufacturer	Type & Miscellaneous Information

**Deadline Nov Issue:**  
20 October 2007

**Advertising Rates:**

Business card \$10.00  
¼ page \$15.00  
½ page \$20.00  
Full page \$30.00

**Classified Ads:**

\$5.00 for 25 words  
25 cents each additional word

**Digital or electronic  
submission to:**

[PPWGuild@aol.com](mailto:PPWGuild@aol.com)

---

*We're on the Web!*

*Visit us at:*

[www.pikespeakweavers.org](http://www.pikespeakweavers.org)

---



**SHUTTLES**

**OCTOBER SPECIAL!!**  
ADDITIONAL 15% OFF  
ALL SALE BOOKS AND  
ALL SALE YARN!!

**SPINDLES & SKEINS**  
635 S. Broadway, Table Mesa Center  
Boulder, Colorado  
(303) 494-1071 · (800) 283-4163  
Mon Noon - 6pm    Tue - Sat 10am - 6pm

PPWG  
PO Box 8104  
CO Springs, CO 80933-8104

