

# PPWG Newsletter

November 2008



PIKES PEAK WEAVERS GUILD -- COLORADO SPRINGS, CO

## IN THIS ISSUE:

November Program	page 2	Hospitality	page 11
Major Workshop	page 3	PPWG Calendar	page 11
November Weaving Sample	pages 4-5	Sample Schedule	page 12
November Spinning Sample	pages 6-7	Officers and Chairpersons	page 13
Announcements	pages 8-9	Advertisements	pages 13-15
November Minutes & Committee Reports	page 10		

# NOVEMBER PROGRAM

## *Taking Stock: Looms, Equipment, Collections, and Stashes.*

Jane Rock Costanza

When I was a youngster, there was a public service advertisement on television that asked, "It's 10:00 PM, do you know where your children are?" Often, that line applies to stash and equipment. It's time to start a new project, do you know where your handpainted, double-twisted, back-flipped, exotic hippo down is?

OK, I don't really have hippo down, but most of us have experienced the dash to our LYS for "hippo down" only to discover later that we already had it -- cleverly tucked away in that workshop bag, in the cardboard box, under the last four issues of the PPWG newsletter, under the sewing machine cabinet in the corner of the back bedroom.

All kidding aside, most of us have thousands of dollars invested in our looms, tools, books, and fibers (LTBFs), but how many of us can actually lay our hands on a dollar amount for how much the contents of our studios are worth? Our LTBFs are assets and as such are important to catalog and inventory so that in the event of a fire, flood, or other mishap we are able to get an accurate reimbursement from our insurance company.

Yes, it can be a painful process -- because most of us would rather be weaving/spinning/dyeing than sorting, indexing, and cataloging (unless you have the same I-Love-Office-Supply-Store gene that I was born with). However, with a computer, digital camera, and either solo or with a friend, taming the wild studio can be a simple process, and one that in the end, is worth thousands of dollars. Not to mention that the satisfaction of knowing an inventory is already done and a dollar amount assigned in the event of a disaster, a move, or other unexpected event, is priceless.

To make the process as painless as possible participants will receive access to pre-formatted blank forms and a planning packet.



# MAJOR WORKSHOP

## 3 SHAFT WEAVES; SIMPLE AND COMPLEX

*By Cindy Ruesink*



My formal education includes a BA from Thiel College in English and German and an MS in Library Science from Drexel Institute of Technology in Philadelphia. I have lived 5 years outside the US: 1 year in Germany as a college student, 3 years teaching English in Japan, and 1 year on family sabbatical in Australia. My interest in learning to spin and weave began while we were in Australia (1981-1982.) After we returned, I took weaving and spinning lessons from local guild members, wove for 2 professional weavers (my apprenticeship), and gradually realized that my interest was pattern weaving with fine threads. I joined Complex Weavers to be a member of the Manuscript and Medieval Study Groups. During the past 5 years while living in Southern Indiana, I discovered many 3 treadle looms and worked with a botany professor at Hanover College to identify woods and construction techniques used in these looms. We received a Hanover College Rivers Institute Grant to scientifically date 9 looms currently located near the Ohio River. My research interests are: American and European counterbalance looms, band and ribbon looms, weavers' manuscripts and account books, and handwoven textiles.

**Summary:** One of the primary cloth weave structures of the past 2000 years is 2/1 twill. As a "simple" structure, it is called serge in silk and wool, jean in cotton and wool/cotton, fustian in linen/cotton, dimity in linen and cotton, and ticking in linen and cotton. If "complex" is defined as more than one warp and/or weft, 2/1 twill is the binder in silk samit and the backing for cotton corduroy, wool plush and silk velvet. This workshop includes drafts for all the above except velvet. A look at counterbalance loom construction, the characteristics of the fibers used, and the uses for the finished cloth help in understanding why 2/1 twill was and continues to be among our most common weave structures.

**Where:** Penrose House, Colorado Springs, CO

**When:** February 10-12, 2009

**Cost:** Approximately \$130. This includes lunch for all 3 days, but not materials. **Deposit:** \$60.00

# PPWG November 2008 Newsletter Sample by Susan Bowman

Structure: Plain weave

Warp: Knitted cotton bias strips called Raggedy Cotton, 500 yards per pound.

Weft: Commercial cotton quilting fabric strips in a gold color that were cut or ripped (wear a dust mask if ripping) about ½ inch wide, alternated with 5/2 Pearle Cotton in an eggplant color.

Sett: 8 ends per inch in an 8 dent reed

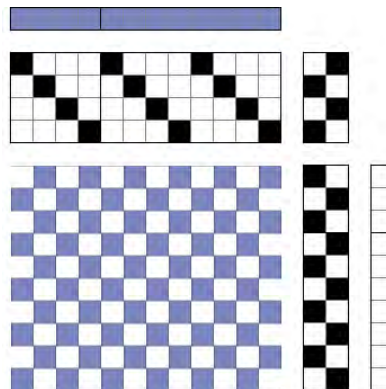
PPI: About 7-8 picks per inch

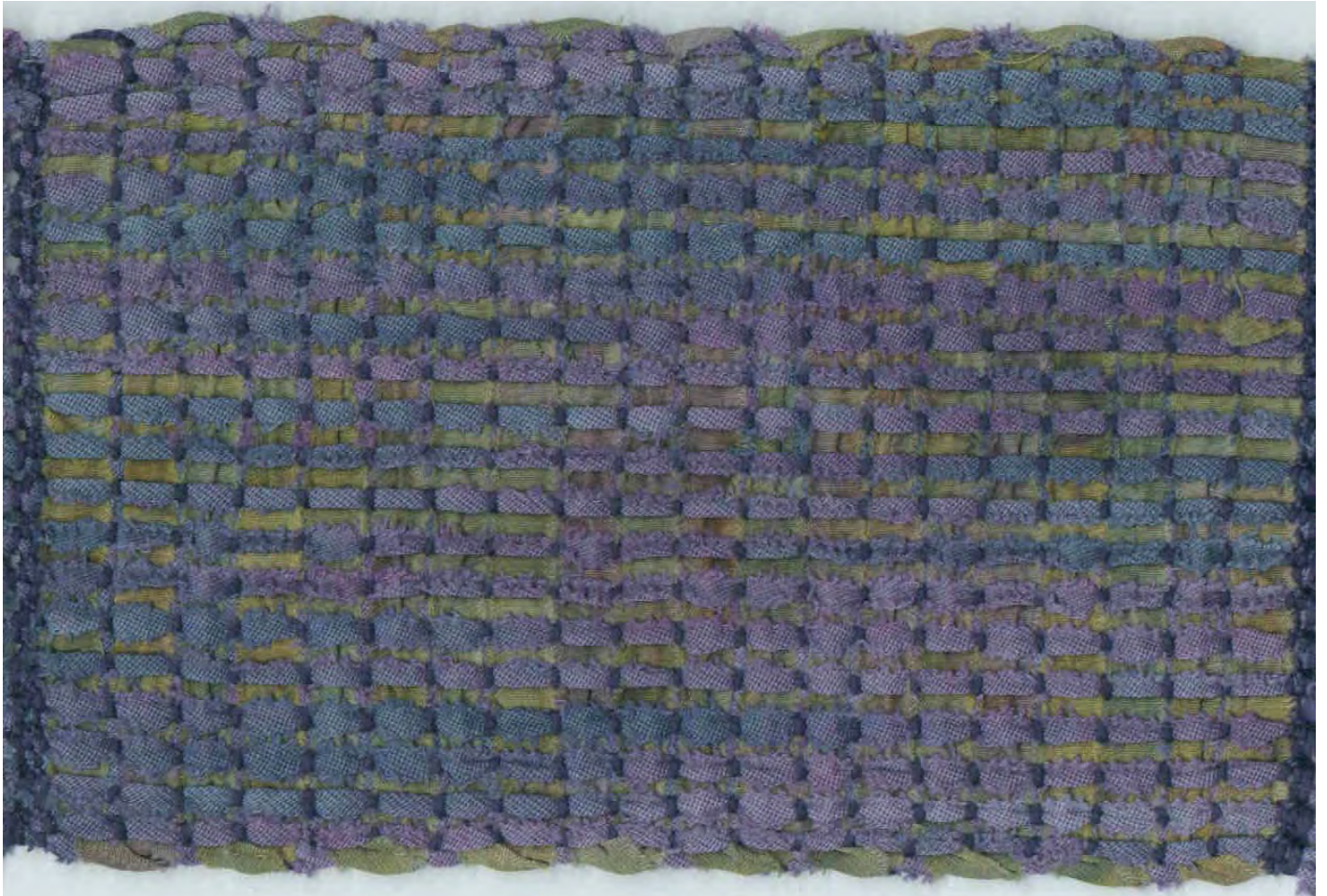
Width in reed: 6 inches

Finishing:

1. Hemstitch while on loom with 5/2 Pearle Cotton.
2. Wash in warm water with mild detergent.
3. Lay flat to dry.
4. Press fabric and trim fringe.

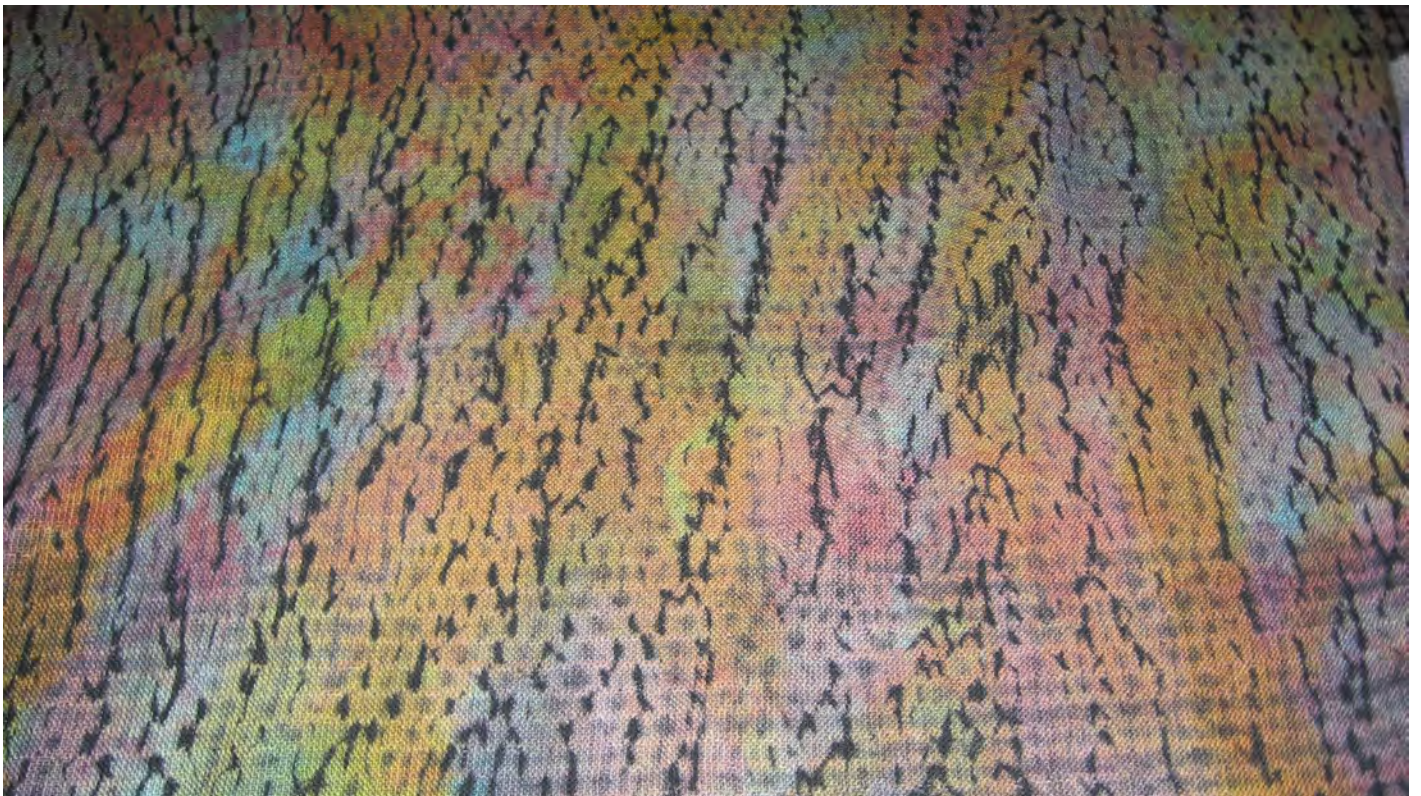
This sample and scarf project was undertaken while Color & Design was studying weaving with fabric strips. The warp is a very interesting knitted cotton bias strip that is available in a natural color from Green Valley Weavers and Knitters. I bought it because I thought it would add texture and be a challenge to use for warp in something wearable like a scarf. I painted the warp with MX dyes before dressing the loom. The structure is plain weave, woven with two shuttles, alternating the fabric strip with the Pearle Cotton, being careful to lightly beat to get a soft hand and some drape. The Raggedy Cotton strips naturally twist in the fringe if left alone.





Above, Raggedy Cotton Sample.

Below, also from Susan Bowman, hand-dyed, handwoven shibori.



# November Spinning Sample - Qiviut by Peggy Bowman

Qiviut is the underdown of the muskoxen - this fine layer of hair insulates them from brutally cold arctic winters, and is naturally shed each spring.

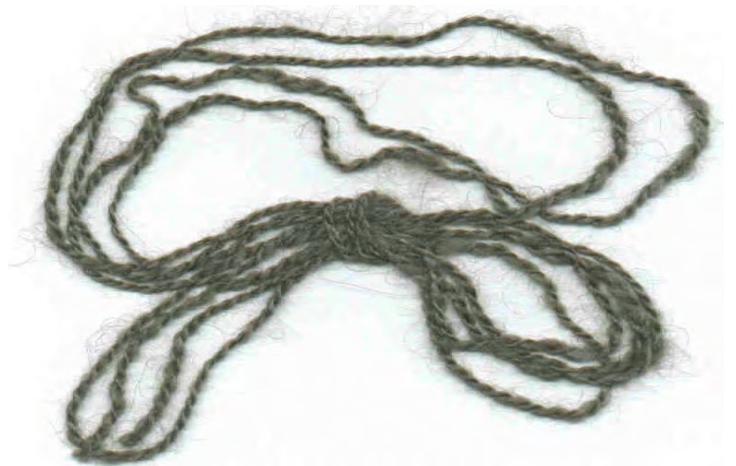
This yarn sample of qiviut is from a “castrate” named Kobuk, one of approximately 45 muskoxen living at the Large Animal Research Station (LARS), University of Alaska, Fairbanks. A friend gave me 4 ounces of his qiviut when she came to visit last year.

The LARS sells every ounce of qiviut they harvest - most is sold to the native cooperative in Anchorage called Oomingmak; the rest is left as raw fiber or processed into wonderfully blended or dyed yarns, and sold on line. The sales support the care and feeding of the muskoxen, a herd of arctic caribou and domestic reindeer.

It wasn't until I'd volunteered to comb muskoxen at the LARS last May that I worked up the courage to spin this luscious fiber. After having combed the muskoxen, scoured the pastures looking for naturally shed qiviut, picked vegetable matter and other “goodies” from the qiviut bound for processing mills, then de-haired my own four ounces of Kobuk's qiviut, I have a new appreciation for the high price of the fiber, the yarn and the finished goods.

Those of you who spin are probably familiar with Celia Quinn, who is a noted spinner and weaver. She lives in Homer, Alaska, and has volunteered to help comb the LARS herd of muskoxen every year for the last five years. I was privileged to spend two and a half days working with her, and she was gracious and generous enough to share her knowledge of spinning and weaving with her handspun qiviut.

I spun this sample from uncarded locks of qiviut. I de-haired the fiber until I couldn't distinguish the short, fluffy “good stuff” from any of the finer guard hairs, then spun and plied it to the approximate size of Zephyr wool/silk. I plan to use the qiviut as weft in some handwoven scarves, one of which will go to the friend who gave me the gift of Kobuk's qiviut.





# Announcements

## IWC 2009: A Conference for Fiber Artists

Where: Fort Lewis College, Durango, CO

When: July 30-August 2, 2009

Intermountain Weavers Conference will have an outstanding array of workshops, nationally-recognized instructors, juried and non-juried exhibits, vendors, a Fashion Show, fellowship and more. Registration begins in January. [www.intermountainweavers.org](http://www.intermountainweavers.org). Some of the workshops already scheduled:

### **WEAVING**

Barbara Herbster – Understanding Supplementary Warp

Ruby Leslie – 50 Ways to Weave Your Color

Michael Rohde – Rug Weaving, from the Easy to the Complex

### **DYEING/WEAVING**

Kathrin Weber-Scott – Dye, Design and Weave Using Space-Dyed Yarns

### **BASKETRY**

Jackie Abrams – Paint and Plait: Bias Plaited Baskets

### **TAPESTRY**

Kathe Todd-Hooker – Color and Tapestry

### **SEWING**

Daryl Lancaster – Garment Construction and Finishing Techniques for Handweavers

### **SURFACE DESIGN**

Heather Allen-Swarttouw – Creative Play – Adding another Layer

### **DYEING TECHNIQUES AND SURFACE DESIGN**

Chris Conrad – Kakishibu – Traditional Persimmon Dye of Japan

# Announcements

**From:** Deb Lane, The Weavers Studio, (719) 636-1017, TheWeaversStudio@gmail.com

**Where:** 1912 West Colorado Avenue, Colorado Springs, Colorado

**When:** The first weekend in December: Saturday 10:00 a.m.. - 7:30 p.m.; Sunday 10:00 a.m.. - 5:00 p.m..

In looking at the number of handwoven pieces I have woven over the years, I decided I needed to find homes for many pieces. I realize the Pikes Peak Weavers Guild no longer does an annual fiber sale, so the question arose, how to find good homes for my handwoven pieces? The answer: Have an annual holiday sale.

I need your help. I realize that I, alone, do not have enough pieces to properly justify a sale and to properly satisfy potential customers. I need handwovens and other fiber pieces to display and offer for sale. Do you have handwoven or other fiber items you would like to find a home for? Consider participating in this event. I will accept one-of-a-kind hand-crafted works by the artist/craftsperson. No resale items allowed at this sale. No used items allowed at this sale. All items must be new, clean and without any odor. I realize this is rather short notice for this years event, but hope you will work with me on this.

I will place ads in *The Gazette Telegraph* and in *The Independent*, but I believe word-of-mouth is the best advertisement. So, I, too, would look to you to let your friends, family and business associates know of this event. My ultimate goal is for this event to occur on the 1<sup>st</sup> weekend in December each and every year. I believe this way we can build a beautiful annual fiber sale with a great following.

In order to cover overhead, I will need to charge a 20% commission on all items sold. Overhead includes advertising, signage, obtaining the credit card account, additional on-site liability insurance, and obtaining sales paraphernalia *i.e.*, bags, tissue paper, *etc.*). With the help of volunteers, I will (1) set up the sale, (2) coordinate check-in and check-out of items for sale, (3) provide clerks to assist in the sale process and monitoring of items on display, (4) dismantle the sale (to once again transform 1912 West Colorado into a law practice) and (5) provide a check to each participant for the items sold (less commission).

Here is what I would ask you to do: (1) let your friends, family, business associates know of this event; (2) provide handwovens and other fiber art pieces. If you have the desire and inclination, volunteer to assist (this is not required).

I will be accepting items for this event as follows: 9:00-5:00 Saturday and Sunday November 29 & 30, every evening up to Thursday, December 4, 2008, from 5:00 p.m.. to 8:00 p.m.. If you need to drop off your items at another date/time, please feel free to call in advance to schedule it so I can ensure I will be here to receive them.

All items for this event need to be marked with your initials, item number, your asking price, and care instructions. You will also need to provide (I) a completed inventory sheet which itemizes all items you are providing for the sale (I can provide you with a blank Inventory Sheet in Word format via email), (ii) a completed W-9 (I can also provide a blank form W-9 via email). When you pick up any unsold items, the inventory sheet will be returned to you indicating which items have been sold and which items are being returned to you, along with your check for the pieces sold (less commission). I do not accept responsibility for lost or stolen items, but I, along with volunteers, will endeavor to monitor the sales event to prevent any items being lost or stolen.

Pickup for unsold items and to receive your check will be the following Saturday between 10:00 a.m.. and 2:00 p.m..(if this does not work with your schedule, simply call to make other arrangements).

I would like to close this event with a wine and cheese celebration commencing December 7, 2008, at 5:30 p.m..

# Guild Business

## **Pikes Peak Weavers Guild Meeting Minutes, October 10, 2008 by Susan Bowman**

In Linda Shaffer's absence, W.W. Walker called the meeting to order at 9:35 am. The minutes of the September 12, 2008 meeting were approved. Kudos went out to the following: Dottie Weir for her role as judge at the Taos Wool Festival, Connie Franz and Judi Arndt for work at the Tactile Gallery, Beverly Weaver and Susan Bowman for work at Smokebrush Gallery, and PPWG for mention of the Living with Beauty Exhibit in the latest Fiber Arts magazine. W.W. had several copies of the John C. Campbell catalog available for anyone interested. While Emily Jones is absent, Dottie Weir will cover the guild mailbox and Susan Bowman will record minutes.

Barb Byerly reported financial status: Beginning balance \$ 14,432. Income \$1,392; Expenses \$ 1,108; Ending balance \$14,717; No report was made on the Money Market Fund.

Dottie Weir mentioned new name tags and that Marisa McMillen will email members who have not picked up their directories. A big thanks goes to Marisa for going the extra mile to quickly resolve a file problem in order to get the directories printed in time for the meeting. W.W. circulated a sign up sheet for the Festival of Lights demonstration at the Pioneers Museum the first weekend in December. On the subject of the upcoming 50<sup>th</sup> Anniversary of PPWG, Louise Conner asked whether anyone had interest in organizing the Guild's historical items such as photos into a scrapbook. If so, see Judy Gearhart or Louise. There was also discussion that Beth Garrison has Guild scrapbook pages that were assembled at some time in the past. A sign up sheet for anyone interested in an afternoon mini-workshop on inkle weaving was circulated. Catie Kiley asked a question about whether there needs to be sign up to bring refreshments in May. The question was deferred to a later date. Beverly Weaver reported several book donations. Doreen McLaughlin reminded everyone that newsletter items are due by the 20<sup>th</sup> of each month. Doreen also asked for members to be "spotlighted" in future articles; contact Doreen if you have suggestions. Diane Fabeck announced that signups are being received and \$60 deposits are due for the Cindy Ruesink workshop. Following announcements and Show and Tell that included a number of woven shibori pieces completed by the More Than Four Study Group, the meeting was adjourned at 10:45 am for library time prior to Gail Necker's program on gourds.

## **Thanks to the following members for their donations to the PPWG library:**

Susan Bowman: *A Weaver's Garden* by Rita Buchanan

Sandy Hutton: *Peter Collingwood, Weaver* (DVD)

Weldon (W.W.) Walker: *New Guide to Weaving #3 – Weaving and Drafting Your Own Cloth* by Peggy Osterkamp and *Mountain Homespun* by Frances Louisa Goodrich

Beverly Weaver: *Natural Dyes* by Gwen Fereday

# PPWG Calendar

The Pikes Peak Weavers' Guild meets the second Friday of each month from September through May at the [Mountain View Church of Christ](#), 1080 E. LaSalle St at Paseo in Colorado Springs, CO. Come for coffee, socializing and library time at 9:00 am.

The business meeting starts at 9:30 and the program begins at 11 AM.

## Meetings and Events for 2008-2009

**14 Nov 2008** - *Taking Stock: Looms, Equipment, Collections, and Stashes.* Jane Rock

**12 Dec 2008** - *John C. Campbell Folkschool: Scholarship Report.* WW Walker  
*Holiday Pot Luck Celebration*

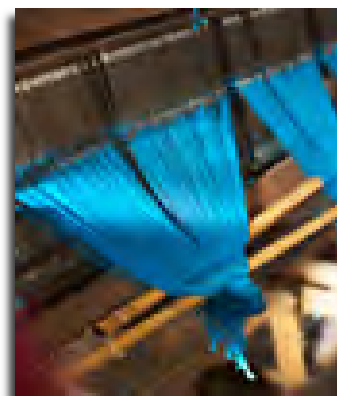
**9 Jan 2009** - *TBA*

**13 Feb 2009** - *Woven Bands and Ribbons.* Cindy Ruesink

**13 Mar 2009** - *TBA*

**10 Apr 2009** - *African Textiles.* Judi Arndt

**8 May 2009** - *Basics of Rug Making.* Sally Kuhn  
*End of year luncheon*



**01 July 2009** - **PPWG Scholarship Applications due for 2009-2010**

## Hospitality

Everyone appreciates a delicious treat with the coffee/tea break. PPWG needs at least two, preferably three volunteers each month who will bring refreshments. Please call Catie Kiley at 719-685-4967 to sign up. The Guild thanks you!

November	Barb Byerly, Donna Schilling
December	Holiday Potluck
January	Kathleen Orr, Dottie Weir
February	Linda Shafer, Emily Jones
March	Jane Rock Costanza, WW Walker
April	Catie Kiley, Ellen Alderson



# Sample Schedule for 2008-2009

We need volunteers for weaving, dyeing, and spinning samples for the newsletter for the months below. At the August Board meeting, the board decided to also add dyeing samples for the newsletter. Hopefully we will always have a weaving sample and/or spinning/dyeing sample for each newsletter. To sign-up, please email ([lindalshaffer@msn.com](mailto:lindalshaffer@msn.com)) or call (719/684-2212) Linda Shaffer.

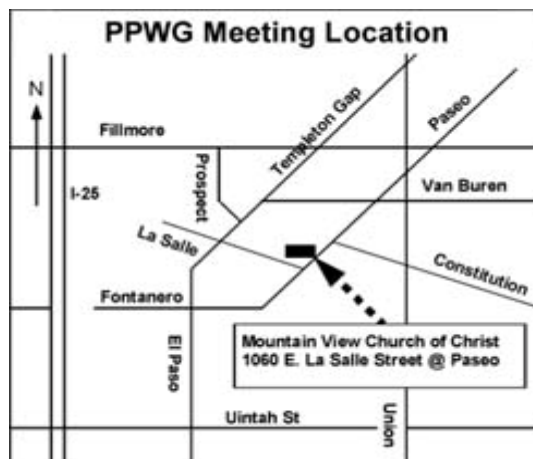
For weaving, we need two (2) samples (6" x 6" minimum, 8" x 10.5" maximum). For spinning we need two (2) samples which need to be butterflies approximately 4 yards long. Dyeing samples may be on fiber or handwoven cloth. So the size of the sample will depend on the media.

Jane Rock or Doreen McLaughlin will be scanning the samples for the newsletter. These need to be delivered to one of them at the meeting the month before they are to appear in the newsletter or mailed to her. After scanning, they will bring the samples to the guild meeting to be placed in the sample notebooks in the library.

Your weaving and spinning descriptions need to be mailed or emailed ([doreen@divide.net](mailto:doreen@divide.net)) to the newsletter editor, Doreen McLaughlin. Linda will print the descriptions from the newsletter for the sample notebooks in the library. If you have other information for the sample notebooks, please give it to Linda at a meeting.

## SAMPLES SCHEDULE 2008/2009:

Month	Month Due	Weaving	Spinning/Dyeing
December	November	Deb Lane	
January	December	Jane Rock	
February	January	Linda Shaffer	
March	February	Jan Seltman	
April	March	Emily Jones	
May	April	Sandy Hutton	
June	May	Karen Currier	Judy Gearhart



**Officers:**

President	Linda Shaffer
Vice President	Weldon Walker
Recording Secretary	Emily Jones
Treasurer	Barb Byerly
Membership Secretary	Dottie Weir
Past President	Debbi Holdeman

**Standing Committee Chairpersons:**

Advertising	Kathleen Orr
Demonstrations	Beth Garrison
Historian	Judy Gearhart
Hospitality	Catie Kiley
Library	Sandra Hutton, Beverly Weaver, Jane Rock
Workshop	Diane Fabeck
Newsletter	Doreen McLaughlin
Publicity	Louise Conner
Website	Jane Rock
Yearbook	Marisa McMillen



**Green Valley Weavers & Knitters**

2115 W. Colorado Avenue • Colorado Springs, CO 80904  
719.448.9963 • 800.457.8559

*Weaving*  
*Knitting*  
*Spinning*  
*Dyeing*  
*Crochet*

Visit our website for information on our study groups and classes.

Books  
Dyes  
Fiber  
Knitting Needles  
Looms  
Spinning Wheels  
Yarns

Open Mon - Sat

info@greenvalleyweavers.com • www.greenvalleyweavers.com

# Knitter's Kove

**SUPPLIES & CLASSES**

Knitting  
Crochet  
Spinning

Knitting Groups  
Wed: 10 -Noon  
Sat: 3-5 pm

Open: M,W,Th, F 10-5:30  
Tu 10-8, Sat 10-5

1817-F N. Union  
Colorado Springs, CO  
719.633.8008

**Get your fiber fanatic fix here!**

Table Rock Llamas  
Fiber Arts Studio, Inc. & the DyeWorks

*Come experience the wonderful world of fiber!*

All your needs for spinning, weaving, knitting, crochet, felting, Jacquard & Gaywool dyes, DyeWorks natural dye extracts, books, patterns, supplies and classes.

Open Tues thru Fri 10-5, Sat 10-4

6520 Shoup Road  
Colorado Springs,  
CO 80908

Phone: 719 - 495 - 7747  
[www.tablerockllamas.com](http://www.tablerockllamas.com)

**Deadline For Next Issue:**

20 November 2008

**Advertising Rates:**

Business card        \$10.00

¼ page                \$15.00

½ page                \$20.00

Full page             \$30.00

**Classified Ads:**

\$5.00 for 25 words

25 cents each additional word

**Digital or electronic submission to:**

[PPWGuild@aol.com](mailto:PPWGuild@aol.com)

**SHUTTLES**

**NOVEMBER SPECIAL!!**  
15% OFF  
ALL MILL ENDS AND  
SPECIAL PURCHASE YARNS!!

**SPINDLES & SKEINS**  
635 S. Broadway, Table Mesa Center  
Boulder, Colorado  
(303) 494-1071 · (800) 283-4163  
Mon Noon - 6pm    Tue - Sat 10am - 6pm

PPWG  
PO Box 8104  
Colorado Springs, CO 80933-8104