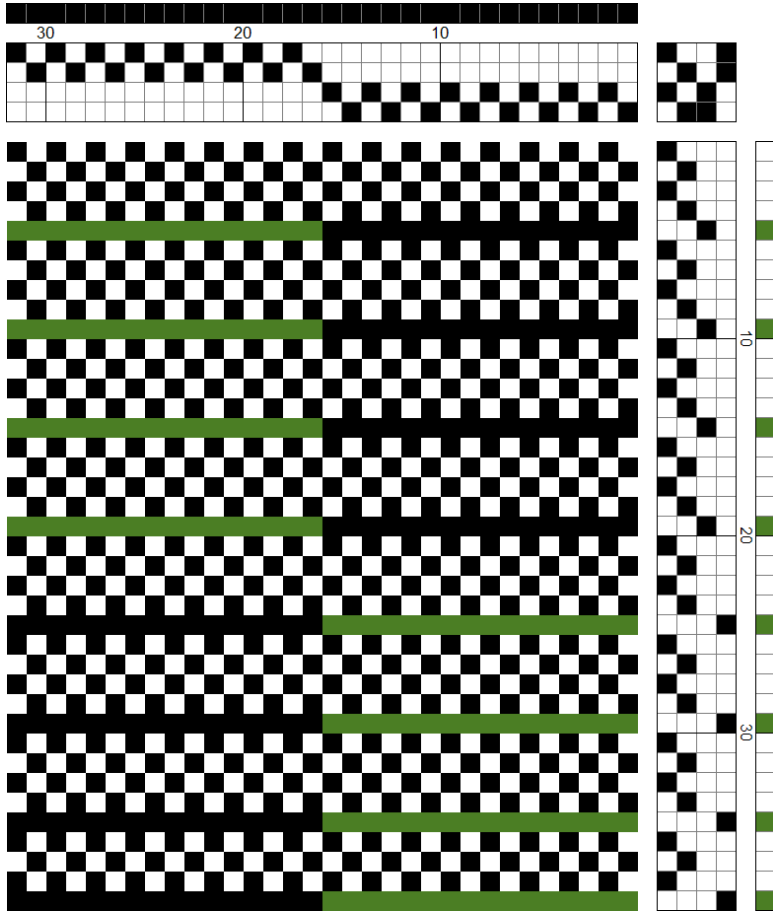


June Weaving Sample by Karen Currier



Sett: 12 epi

Picks: 12 ppi

Warp and weft: rayon, rayon nylon, and crochet cotton mix

Warp shrinkage/draw-in: 15%

This sample was one of my first simple explorations based on the book "Woven Shibori" by Catherine Ellis. It was a Monks belt threading draft used for the pull up threads (found on page 36). I chose a simple pattern to start with, as that seems the best way to see how the process worked. This project also introduced the concept of "vat dyes", which are great fun to combine with woven shibori and other dye techniques. My dogs enjoy the down to earth smell of indigo, which is another type of vat dye. The vat dye used in this project was a violet from Dhamra Trading Co.

Two scarves were woven from this warp, plus this small sample for the newsletter. Both scarves have gone on to new homes. The owner of one of the scarves really loves the comments she gets from hers.

Since this simple beginning I have used this technique on several pieces of material for jackets. The most recent weaving done with the shibori technique and the vat dye was a 30/2 rayon set of samples for a study group. I love how it came out, but I think I'll stick to something in the range of 10/2 or even (maybe) 20/2. It looks like the finer the threads the less surface the vat dye has to adhere to and the less pronounced the shibori pattern is because of that. It's the patterning that makes this technique so much fun.

Editor's note: Although the draft (above left) is exactly as it came from Karen, based on her written description, there should be 4 picks rather than 3 in the last treadle block (1-2-1-2-4).

