

# PPWG Newsletter

April 2010



Robin Wilton's Handspun Alpaca Merino with Heidi Bates Shadow Weave

## **PIKES PEAK WEAVERS GUILD -- COLORADO SPRINGS, CO IN THIS ISSUE:**

April Program	page 2	Library News	page 10
April Weaving Sample	page 3	Minutes & Committee Reports	pages 10-12
April Spinning Sample	page 4	Sample Schedule	page 12
From the President	page 4	Hospitality	page 12
VP Notes	pages 5 - 7	PPWG Calendar	page 13
Announcements	page 8	Officers and Chairpersons	page 13
Slate of Officers	page 9	Classified Ads	page 13
Directory Changes	page 10	Business Ads	pages 14-16
New Members	page 10		

# April Program by Helen Summers

## The Creative Process: Turning Inspiration into Garments

Helen will be presenting a talk about the creative process. She will discuss where ideas come from, how to implement them, and her general decision-making process (which she does not advocate as *the* process). Helen will describe the process, from inspiration to finished product, of the creation of two garments, with accompanying slides. Then she will finish up with some thoughts about the creative process in general, including ways to jump-start the creative juices.

Helen Summers began to weave in 1977 while working as a research lab technician at the Yale School of Medicine. She treated weaving as a hobby until 1985, when, after marriage, a move to Philadelphia, and a job that just wasn't a good fit, she began to weave as a profession. She first concentrated on weaving accessory items (scarves and shawls) and items for the home (place mats, lap rugs and so forth), then became enamored of weaving in silk and using shadow weave as her weave of choice. She dropped the household good line, but didn't move into the realm of clothing until 1991, when she got her first AVL loom and began making Japanese-style jackets.

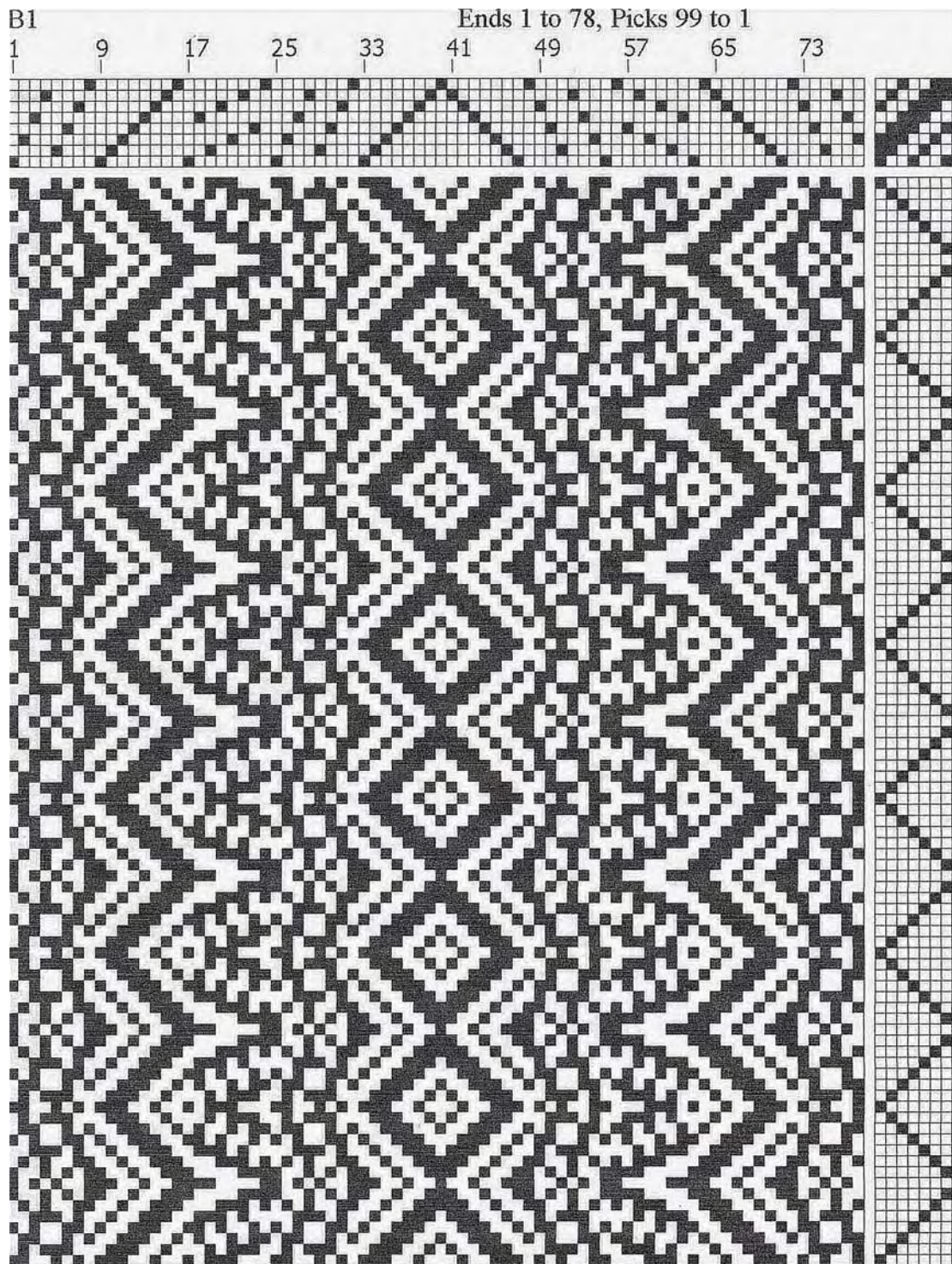
Her evolution as a clothing designer has led to a continuing exploration of oriental inspired clothing, focusing on comfortable, stylish and unique wearables. She still prefers to weave using silk and shadow weave, but also weaves with blends and a technique called network twill.

In the past ten years or so, she's added surface design to weaving, mostly to create beautiful linings — a little secret only the wearer knows — but also combined with handwoven fabric in the body of the piece. Recently, she's also become interested in quilting, and is having fun adding a little bit of that to the garments she make. After living in New Mexico for more than 20 years, she's still inspired daily by the colors of the landscape and the cultures.

Please take this opportunity to wear something you have made yourself and show off your talents. Let's make this our own mini fashion show. Also Helen asks if you have a problem or some material you have woven you want to ask her about to please bring it. Remember that we must be out of the church by 12:30 this month, due to an event they are having, so the program will start early.



# April Weaving Sample by Carol Wilkinson



This sample resulted from a towel I wove for a friend whose kitchen colors were sort of Southwestern. So I tried to find yarns in my stash to accommodate that color scheme. The warp contains various 8/2 unmercerized cotton yarns. The weft is 16/2 bleached ivory line flax from Henry's Attic. The weft yarn for the hems is 10/2 mercerized cotton. Being 50% linen, the towel is very absorbent.

The pattern is Rosepath in Multiple Tabby Weave found in Strickler's 8-Shaft Patterns book, #728 on page 228. Sett: 24 epi; 12 dent reed, sleyed double Width on loom: 22.5 inches Finishing: Machine washed hot and dried on a hot cycle. Shrinkage: 13% in width and about 16.5% in length.

Multiple Tabby Weave is a weave system of several threading blocks each of which has its own tabby. There is no "true" tabby or plain weave in this pattern.



Left: Close up of the towel.

Right: the towel that has been donated to the Library raffle by Carol Wilkinson.



# April Spinning Sample by Heidi Bates



The spinning sample for April was one of my first attempts at long draw in the fashion that Norman Kennedy taught at his spinning workshop last year. Norman mentioned that he favored Romney sheep fleece for his projects and I wanted to give it a try. I searched one of my favorite groups on Ravelry, a social networking website for knitters, crocheters, spinners, dyers, and weavers, for some possibilities in hand-dyed Romney fiber. That led me to the popular website Etsy, which allows the general public a medium in which to sell handmade items. I found this lovely blend of lilac, purples, and grey that I used to spin while trying out my newly learned skills. I learned quite a bit while spinning these 4 ounces about the long draw technique. I'm still practicing too. Wool I'm finding out does act quite a bit different than other fibers for spinning long draw. I plan to use the yarn to make some nice mittens.

## *President's Notes by Susan Bowman*

Isn't the title for Colorado Weavers Day: *Connections*, apropos? The Handweavers Guild of Boulder "hopes that everyone who attends will connect with fiber, other weavers, and spinners from across the state, as well as those who have gone before us and those who will carry on." The word "connections" can have a warm fuzzy feel or it can evoke thoughts of technology which isn't always warm and fuzzy!

I knew we were a "connected" guild but didn't realize just how connected until recently looking at an email folder for PPWG on my computer. I was astounded to find over 1100 emails for this guild year! Certainly this is a sign of the energy and activity levels within PPWG, probably one of the more energetic guilds that I have belonged to in my 25+ years of weaving. This got me to thinking about how things have changed in the last 25 years. PPWG members are among the many contemporary weavers that have become very savvy about technology. We use computers and software to design textiles, drive our looms, subscribe to electronic newsletters/magazines, listen to speakers via podcast, communicate globally via email and web sites, and transact all manner of e-commerce related to our craft. It's exciting to think about what the next 25 years might bring.

Still and all, technology only provides tools that help us do things more effectively and efficiently. Technology won't (yet) design our textiles, warp our looms, or throw the shuttle. Thankfully, that still takes the creativity, eye and hand of the craftsperson and artist, which I imagine is why weaving continues to captivate us as much today as it did weavers throughout history.

I'm looking forward to the April 9<sup>th</sup> program, hearing Helen Summers speak and show us her wonderful handwoven fashions!

# Vice-President's Notes by W.W.

**On the May meeting and Luncheon:** We will be having a busy meeting in May. Not only will we be voting in and installing the new officers but the first Guild book sale will be taking place. Ellen Alderson, our second VP, has been heading this effort up all year and with your great donations we are going to have quite a selection. It is not too late to donate items for the sale so if you haven't cleaned out your library (or in my case the closet) bring any books, videos, or magazines to the April meeting so we can get them priced.

Our May program is being presented by one of our newest members, Kathleen Cook, and is titled "Spinning with Spiders, Saints, and Sinners". Kathleen invites us to gather around the virtual campfire for an interactive storytelling session of the triumphs and tribulations of heroes and heroines in the myths, legends and folktales of diverse cultures and times. Part lecture, part reader theater, the program invites you to enter the realm of colorful characters that dazzle, delight and sometimes deceive us with their fiber art skills. What a wonderful way to celebrate our sale of the written word.

Following the program we will be adjourning for our annual end of the year luncheon. I have not received any suggestions so in absence of any I will be planning the luncheon at the Train Depot again. Please let me know if you plan on attending so I can let them have an accurate head count.

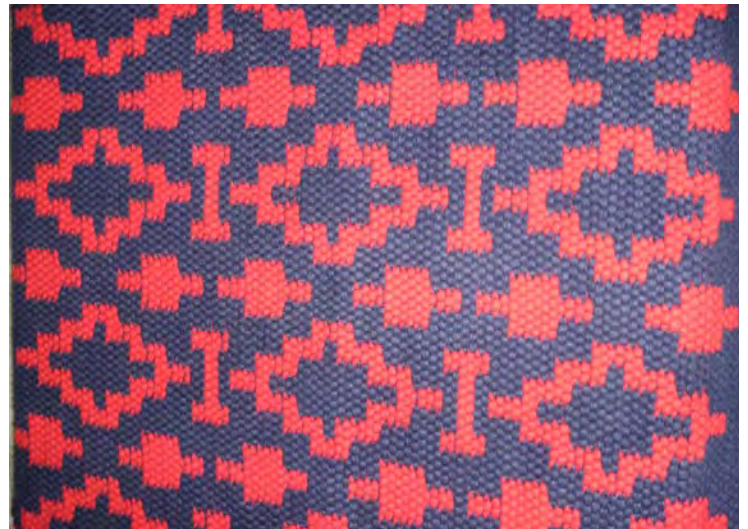
**On the December Sale Event:** When Deb Lane proposed in January PPWG take over the handwoven sale she has done out of her office for the past few years, the PPWG Board created an exploratory committee to look at the possibility. The committee presented the pros and cons of the situation to the board in February, and was then tasked with creating a beginning draft of standards/rules (see pages 6 and 7 of this newsletter) and a two year budget of the sale and for the Board to present to the membership. The budgets for 2010 and 2011 (see below) only give the expected expenses and sales totals. If you would like a complete breakout of the expected expenses please contact Weldon Walker, 1<sup>st</sup> VP.

2010

Sales	1128
Expenses	<u>185</u>
Generated income	843

2011

Sales	1128
Expenses	<u>550</u>
Generated income	578



Right: Rug by Bev Weaver

# Vice-President's Notes by Ellen Alderson

In May we will have our Media Sale to support our library and the scholarship funds. We have received many fine magazines, books, videos and sample cards. Be sure to bring unwanted books and duplicates of fiber related media to our April meeting. Remember non fiber related items will be traded at local used book sellers for credit to get books and magazines for the sale. We will have receipts for all donors for your tax deductible contributions. If you did not receive your receipt be sure to check with Ellen or Weldon to obtain yours. Thanks to all who have contributed to our sale.

Pikes Peak Weavers Guild Sale  
General Information and Standards

Objectives

- Provide an opportunity for all current members of the guild to participate.
- Stimulate public interest in traditional arts by allowing them to experience the richness, variety, and unique qualities of excellent craftsmanship.
- Give members the opportunity to show, promote and sell their work.
- Provide income to Pikes Peak Weaver's Guild

Sale Policies

- A. The Pikes Peak Weavers Guild (PPWG) is not responsible for loss, alteration or damage to any item in the sale.
- B. Eligibility for participation in the sale is limited to current members who have paid their dues by the first day of October of the year of the sale.
- C. All participants are expected to contribute time and talents to the Sale. Fulfilling your obligations (work shift) for the Sale will allow the standard commission to be applied to your individual sales. If you fail to fulfill your obligations or decide not to fulfill your obligations (work shifts) to the Sale then you are agreeing to pay an additional commission amount on your individual sales as outlined below.
- D. Serving on the Sales Committee for the year preceding the annual sale fulfills the work shift commitment for that year.
- E. The standard commission PPWG will receive is 22% of the individual's sales after the sale participant completes the minimum required work shifts.
- F. If a participant chooses not to work the minimum requirement, the Guild's commission will be increased to 40% of that individual's sales.
- G. The following jobs are available on the committee:
  - 1. Chair person
  - 2. Standards (three people so possibly a subcommittee or separate committee)
  - 3. Inventory
  - 4. Advertising/Publicity
  - 5. Set-up/take-down
- H. The following jobs will need to be filled for the annual sale:
  - 1. Inventory check-in (2 people)
  - 2. Set up (3 people)
  - 3. Greeter/customer assistance
  - 4. Cashier (3 per day)
  - 5. Inventory check-out (2 people)
  - 6. Clean up (3 people)
- I. Minimum work requirements for the 22% commission level: TBD. All participants working the sale must arrive for their shift 15 minutes before their shift.

Standards

- A. Items submitted for the sale should be examples PPWG's main areas of focus: weaving, spinning, and dying. Sales items may demonstrate one of these areas and also include other textile techniques. Following is a list of items that belong in the primary category.
  - 1. Weaving or interlacement techniques
  - 2. Spinning/handspun yarn
  - 3. Painted, blended or dyed fibers
  - 4. Basketry
  - 5. Bead weaving
  - 6. Braiding
  - 7. Embroidery or stitchery
  - 8. Felting
  - 9. Knitting or crochet
  - 10. Lace or knotting
  - 11. Paper (handmade)
  - 12. Rug Hooking
  - 13. Appliqué, piecing, or quilting

In an effort to offer and display work in other media and draw a diverse group of customers to the sale, PPWG encourages its members to include pieces in other media outside the guild's main areas of focus (referred to as secondary category). Items not in the primary areas must be submitted for approval by the sales/standards committee.

(continued on next page)

- A. Items submitted for the sale may not be made from commercial kits, imports, purchased baskets, wreaths, wooden boxes. Items may not utilize any patterns or embellishments covered by copyright laws without written permission of the copyright owner. In such cases, the copyright owner must be credited.
- B. Items that have been part of the sale for two previous consecutive years may not be resubmitted.
- C. In keeping with the with the guild desire for quality work, items must be:
  - 1. New, not used or worn.
  - 2. Free of all odors except those inherent to the fiber (No odors such as camphor, mothballs, smoke, Fabreeze, perfume, or fabric softeners.)
  - 3. Finished, clean, and pressed. Ready for display
  - 4. Safe for the intended use.
- D. To insure the sale reflects PPWG’s main areas of focus the items sold will be evaluated after each year’s sale to determine the make up of the primary focus items vs. secondary focus items. The goal is to have the primary focus items account for >50% of the total sales. The result of this evaluation can be used the following year to make necessary changes, as determined by the sales/standards committee, to the type/number of items accepted for the sale.

**Labeling/Tagging**

Federal Trade Commission regulations require handcrafted fiber items to carry securely attached, legible, conspicuous, non-deceptive labels. “All textile wearing apparel used to cover or protect the body, except shoes, gloves, hats, scarves and small shawls” must be labeled. Items such as handkerchiefs, belts, suspenders and neckties are excluded because they are not used to cover or protect the body. A complete copy of

- A. The label must contain the following information:
  - 1. Producer’s name.
  - 2. Fiber content in order of percent by weight, using generic name. Imported fiber must be listed, e.g. “Made in the USA with imported fibers”.
  - 3. Care instructions securely attached to include dry clean, wash, dry, iron, bleach instructions and any special warnings.
  - 4. Exemptions include rugs, table linens, wall hangings, toys, blankets, pillows, purses, shoes, gloves, hats, wall hangings, jewelry, and ornaments.
- B. The artist must keep records on file for at least 3 years containing:
  - 1. Percentage of fiber by weight and sample of fiber.
  - 2. Date, source and quantity of raw materials purchased.
  - 3. Date of manufacture and date of sale.

**Inventory**

- A. Hang tags - All members must use Guild hang tags on all items. All hang tags must be filled out as described below and as shown in the example
  - 1. Member’s personal identification number (PIN) as assigned by the guild.
  - 2. Artist name
  - 3. Description
  - 4. Fiber content/care
  - 5. Item number
  - 6. Price
- B. Labeling - As a service to our customers, all items must be labeled with fiber content and care instructions, with the exceptions noted later. Textile wearing apparel is required by law to have permanently attached labels and will not be accepted into the Sale if not properly labeled. See Fiber/Care Labeling section above for detailed instructions.
- C. Self-addressed, stamped envelopes - Bring a self-addressed, stamped envelope (SASE) for the mailing of your check.



**Left: Colorado Tartan woven by Heidi Bates.**

**Right: Blue wool silk hand dyed fabric by Deb Greer**



# ANNOUNCEMENTS

## Weaving Exhibition Brings Navajo Culture and Cuisine to Denver

*A Holistic Journey with Diné Weaver Roy Kady* opens April 2<sup>nd</sup>, 2010, at the University of Denver, Sturm Hall. The exhibit, *Na'ashjé'ii Bik' Biyiin (Chant of the Male Spider)*, is co-curated by Teresa Montoya, Diné (Navajo) graduate student in the Department of Anthropology, and Mr. Roy Kady, a Diné weaver from Tees Nos Pos, Arizona.

Exploring the interconnected spiritual and technical processes of Diné weaving, the exhibit presents the unique perspective of one Diné weaver. While the practice of weaving is intergenerational in the Dine' culture, the featured weaver will primarily share his own personal stories, traditions, and relationship with the natural environment that inspire his creative process. Visitors are invited to touch, smell, and participate in this reflective exercise through an interactive exhibit environment.

The opening reception will feature a lecture and demonstration of weaving by Mr. Kady. Mr. Anderson Hoskie, Diné medicine man, will also present facets of traditional knowledge about the weaving process. Mr. Freddie Bitsoie, professional Diné chef, will prepare a contemporary interpretation of traditional Diné cuisine including: Seared Churro Lamb, Blue Corn Puree, Butternut Squash Tarts, and Navajo Tea for attendees to experience, providing a holistic taste of what Diné culture has to offer.

What: *Na'ashjé'ii Bik' Biyiin, Chant of the Male Spider*

When: April 2, 2010 - April 22, 2010

Opening reception and lecture: Friday, April 2, 5:30-8pm

Regular gallery hours: 9 am - 4 pm, Mon-Fri

Where: Museum of Anthropology, University of Denver

2000 E. Asbury Ave., Sturm Hall, Room 102

Cost: Always free

## Colorado Weavers Day: Connections

Saturday, May 15, 2010

Boulder, Colorado

Registration, which includes lunch and a goodie bag is \$45 before May 1; \$50 after May 1.

Plan to spend Saturday, May 15th with fellow fiber enthusiasts expanding your knowledge about textiles, textile techniques, and ideas. Make new fiber friends; enjoy your familiar ones. Be inspired! The conference will be held at the Glenn Miller Ballroom on the CU Campus in Boulder. Attendees will have the opportunity to see the exhibit, "Navajo Weaving: Diamonds, Dreams, Landscapes" at the CU Museum of Natural History. A special reception for attendees is scheduled for Friday, May 14th from 4:00-6:00 pm at the museum. Other events are planned on Friday as well. Visit [www.cumuseum.colorado.edu](http://www.cumuseum.colorado.edu) for more information about the exhibit.

The morning features two keynote addresses: Ann Lane Hedlund, "A Turning Point: When Modern Navajo Weaving Became Art"; Suzanne MacAulay, "From One End to the Other: Weaving Across Time and Space."

In the afternoon, HGB members will present short demonstrations on their areas of expertise. This informal learning time will provide an opportunity to sample new ideas and techniques.

For further information about Colorado Weavers Day, the conference brochure and registration form, visit: [www.handweaversofboulder.org](http://www.handweaversofboulder.org).

# Slate of Officers for 2010-2011

The PPWG nominating committee consisted of Jane Rock Costanza and Sandy Hutton. We want to thank nominees for their willingness to have their names placed in nomination. It is a true testimony to our guild that serving on the nominating committee was a real pleasure.

Election and installation of new officers will take place at the May meeting.

## Pikes Peak Weavers Guild Officers Slate for 2010/2011

**President:** Beverly Weaver  
**1st VP:** Ellen Alderson  
**2nd VP:** Sarah Richards  
**Recording Secretary:** Deb Greer  
**Treasurer:** Emily Jones  
**Membership Secretary:** Dottie Weir  
**(Past President:** Susan Bowman)

## 2011 Standing Committee Chairs

**Advertising:** Cozy Swickard  
**Demonstrations:** Beth Garrison and Barb Byerly  
**Hospitality:** Maria Robinson and Pam James  
**Library:** Anne Vickrey Evans and Debra Scott  
**Major Workshop:** Sally Kuhn and Sandra Hutton  
**Newsletter:** Doreen McLaughlin  
**Publicity:** Deb Lane  
**Samples:** Robin Wilton  
**Website:** Jane Rock  
**Yearbook:** Cozy Swickard  
**Email Distribution List:**

Right: *Gourd mask wall hanging by Gail Necker, on a blue shawl by Deb Greer.*

Below: *Silk Road Artisan's exhibit photo by Judi Arndt*



## Library News by Deb Scott

Several more fabulous, hand made items have been donated for the Library raffle to be held in May. The latest donations are: Towel, handwoven and donated by Carol Wilkinson and three silk scarves, hand painted, and donated by Heather Hubbard.

Previous items donated :

Towel - handwoven and donated by Siv Nelson  
Bag - handwoven and donated by Beverly Weaver  
Scarf - handwoven and donated by Susan Bowman  
Porcupine Quill Medicine Wheel - handmade and donated by Jackie Anna  
Hemp Mat - handwoven and donated by Heather Hubbard  
Inkle Band ornaments - handwoven and donated by Robin Wilton  
Towel - handwoven and donated by Weldon Walker  
Towel - handwoven and donated by Sandy Hutton  
"Jazz Cords" for a Baby Wolf - donated by Edna Devai

Tickets for the raffle are available at each meeting for a cost of \$1.00 each or 6 for \$5.00

Thanks go out to all members who have generously donated items and purchased tickets for the raffle.

## Directory Changes

Yamuna Weiner's new email address is: [ywriver@gmail.com](mailto:ywriver@gmail.com)

## New Members!

Ille Brebach  
6030 Buttermere Drive  
Colorado Springs, CO 80906  
makia9@gmail.com

Julia Nace  
1322 W. Pikes Peak Avenue  
Colorado Springs, CO 80904  
julia.nace@earthlink.net

## Guild Business by Deb Greer

Board Meeting: The meeting was called to order at 8:35 am by Susan Bowman. Attending were Susan Bowman, Ellen Alderson, Weldon Walker, Linda Shaffer, Deb Lane, Debra Scott, Barb Byerly, Dottie Weir, Maria Robinson, Pam James, Doreen McLaughlin, Emily Jones, Anne Vickrey Evans, Heidi Bates and Deb Greer. Minutes for the February 12, 2010 meeting were corrected to reflect 8:40 instead of 9:40 as the time of commencement, and approved with the change. Handwoven Magazine is asking Guilds for a Roving Reporter (RR). The RR reports highlights of the Guild's activities for the new community website. Bev Weaver volunteered to be our RR. CS Art Examiner will be allowed access to our newsletter. Doreen McLaughlin said that if they quote directly or use photos they should ask permission first. December Sale Committee: the biggest discussion centers on how to handle credit cards. Weldon Walker reported on the research he has done. Deb and Denis Lane offered theirs at no cost for this year, but the Guild needs to figure this out on a separate basis for the future. Several options were researched but none can be implemented until the membership votes to support this event. Weldon Walker discussed that this year the Guild would have to invest around \$200 to finance the initial show, then after the first year profits are paid in, there will be seed money left to make the show self sustaining thereafter. Standards discussion: Deb Lane suggested we allow for a 6 weeks advance submission/evaluation for items outside of the definition of "Fiber Art" to be allowed into the show. We could also change the statement to what the Guild emphasis is. Dottie Weir said a mixed variety of art helps to better display all of it. She wondered if we should be open on Friday night of the Sale weekend as an "Opening"? This could bring in customers who can't make it for the weekend and add some social interest as well. The proposal for the Sale is ready to send out to the Guild with some minor changes. The budget estimate will be reported to show debits and credits (continued on next page)

## Guild Business by Deb Greer (cont.)

totals. If someone wants a line item report they may obtain a copy from Weldon. Heidi Bates, on the subject of standards, said that members already have their own higher standards the Board agreed that with the changes discussed the proposal is ready to present to the membership. Treasurer: Emily Jones stopped payment on two refund checks from the last workshop that were missing since October of 2009. The stop payment cost \$29 each. To avoid confusion, in the future the Treasurer will mail workshop refunds. A cash award for Colorado Weaver's Day was discussed. It was decided that a single \$150 Judge's Choice Award will be sponsored by PPWG. \$75 will be paid out of our \$500 anonymous donation and \$75 from the Operating Fund. Weldon asked about our State Fair awards. We will sponsor those when we receive the paperwork. Programs: Ellen Alderson handed out a suggested schedule for 2010-2011 programs and Major Workshops. See Ellen for a copy of her draft. Suggestions are welcome. The meeting was adjourned at 9:30 am.

Business Meeting: The meeting was called to order at 9:40 am by Susan Bowman. Kudos were given to several members. Officer's Reports President: Susan Bowman announced that PPWG will fund a \$150 Judges Choice Award for Colorado Weaver's Day. She announced the Bev Weaver has volunteered to be the PPWG Roving Reporter for *Hand Woven Magazine's* new online community. She will report highlights of the Guild's activities. Thanks Bev! We will also be emailing a copy of our monthly newsletter to the *CS Art Examiner* to provide the Guild with community exposure. 1st & 2nd V.P. Programs: Weldon Walker introduced today's program expert, Anne Vickery Evans, whose subject is Felting. Next month's program on Sewing with hand wovens will be given by Helen Summers of New Mexico. Helen asks that we bring items and questions. In May, Kathleen Cook's experience as a librarian and her fiber interests will be combined in her presentation on Spinning and Weaving used in Fairy Tales. The announcement of the location of the Annual Luncheon will be next month. If anyone has a suggestion, please contact Weldon. The VPs are still looking for Book Sale donations. Ellen Alderson asked the Membership if a Convergence Wrap-up would be of interest as a program next year. She sent a list around for interest on who would volunteer for Show n Tell or to recount stories/experience from Convergence. Ellen announced that if anyone would be interested in sharing a house rental with Gail Necker's Basket Guild for Convergence, please contact Gail or Ellen. Helen Summers and her husband need a place to stay for April's program. If you can host the couple, please contact Ellen. Recording Secretary: Deb Greer read a thank you note from a weaver who downloaded the Nelson's Weave Design program and sent us a donation of \$25. She asked the membership to note that the Bulletin Board has newsletters from other Guilds, advertising for workshops, sales and goods, and other Guild mail posted for their information and use. Treasurer: Emily Jones gave the Treasurer's Report. 2.1.2010-2.28.2010: Inflows - Membership \$25 Library \$15 Workshops \$905 Total: \$945 Outflows - Programs \$300 Newsletter \$30.30 Business Expenses \$44 Special Events - Expense \$20 Web Page Expense \$159.50. Total \$553.80 Balance Forward 2.28.2010 \$11,666.26 Operating Monies: \$10,535.45 Income Less Expense \$391.20 Less Dedicated Funds -\$15 = \$10,911.65. Dedicated Monies: Library \$119.49, Income \$15 = \$134.49. Demonstrations \$511.32 Gifts for Awards \$500 = \$1,145.81 Closing Balance 2.28.2010: \$12,057.46. PPWG Fund For Excellence in Fiber Arts \$5,147.24 PPWG Memorial Fund/Vanguard \$4,339.16. Membership Secretary: Dottie Weir reported 2 new Members this month. Past President: Thanks to *Linda Shaffer* for keeping the Minutes last month! Standing Committee Reports: Newsletter: Doreen McLaughlin reminded the Membership that \$15 will get a hard copy of the newsletter delivered to your mail box. She said that an Email Distribution Volunteer is needed to fill the vacancy that Marisa McMillen will leave this summer. The *Yearbook* part of the work Marisa has been doing is taken care of. Major Workshop: Heidi Bates said the *Silk Spinning with Celia Quinn Workshop* is filled. She announced that an off-schedule program by Celia will be given from 7- 8:30 pm on Wednesday March 31 in the Carnegie Library downtown. Celia will discuss Spindles and Distaffs. Library: Debra Scott said that the item list will be corrected by next month. Felting Books to support exploration of today's program on Felting are available to be checked out. Publicity: Deb Lane will advertise the Celia Quinn off-schedule program. Samples: Robin Wilton asked for Samples sign-ups for next year. Old Business: Doreen needs some help setting up the tables for Colorado Weavers Day at 8:30 am opening day. See her to volunteer. She needs our Guild Brochures from Dottie. If anyone has display items, call Doreen to donate or bring them to the event. Also W.W. is available at Green Valley Weavers every Wednesday, give to Dottie, or bring to the May Meeting. We have two tables. Judy Arndt reported that we have a new curator at the Pioneer Museum, who has previous experience. He gave a slide presentation and wants to clean up the museum and the collections. A Grant was received to provide funding for maintenance and repairs. The fund raising program for the Pioneer Museum has been set up so that all donations go exclusively to the Museum. New Business: Weldon discussed the December Sale with the membership and explained how the exploratory committee has done drafts of a preliminary budget, standards and rules of the show. The package will be presented to the membership in this month's newsletter. We will vote on whether to pursue the Sale as an official Guild activity at April's meeting, so please read the drafts and have any questions or suggestions you may have ready to discuss.

(continued on next page)

## Guild Business by Deb Greer (cont.)

Announcements: Norman Kennedy will appear in concert March 25<sup>th</sup> 6:30-9 pm at the Carnegie Reading Room, Main Library, Donation: \$10. Margaret Seagraves of the Tri-Lakes Center for the Arts in Palmer Lake, attended the meeting as a guest to invite the membership to enter "*America the Beautiful: The Fiber of Our Heart*", a juried show scheduled for July 3-9 exhibition. Entry Packets can be obtained from the Guild Bulletin Board or [www.trilakesarts.org](http://www.trilakesarts.org). Scroll down to "call for entries" and follow the links. Entry deadline is June 1. Tina Broderson reminded Members that registration for Colorado Weaver's Day activities is imminent. The Conference Fee is \$5 more after May 1. She said if you hand your registration to her it will be processed faster. Registration forms are available on the Guild Bulletin Board or visiting the Handweavers Guild of Boulder website at: <http://www.handweaversofboulder.org/> scroll down to Colorado Weavers Day and follow the links. The meeting was adjourned for Show N Tell at 10:30 am.

## Sample Schedule for 2009-2010

We need volunteers for weaving, dyeing, and spinning samples for the newsletter. Hopefully we will always have a weaving, spinning, and dyeing sample for each newsletter. As you can see there are still some holes left in the sign up sheet. If we don't have volunteers, then we won't have samples that month. If you would like to volunteer, please let Robin Wilton know.

For weaving, we need two (2) samples (6" x 6" minimum, 8" x 10.5" maximum). For spinning we need two (2) samples which need to be butterflies approximately 4 yards long. The two (2) dyeing samples may be on fiber or handwoven cloth. So the size of the sample will depend on the media.

Doreen McLaughlin needs digital photos of the sample for the newsletter. Please save the photos in .jpg format and e-mail them to Doreen. If you do not want to take the digital photos yourself, she will take the photos. Please contact her to make arrangements for the photos.

Your weaving, spinning, and dyeing descriptions need to be given, mailed, or emailed to the newsletter editor, Doreen McLaughlin ([editor@pikespeakweavers.org](mailto:editor@pikespeakweavers.org)). Robin will print the descriptions from the newsletter for the sample notebooks in the library. If you have other information for the sample notebooks, please give it to Robin at a meeting.

SAMPLE SCHEDULE 2010 - 2011:

<u>Month</u>	<u>Month Due</u>	<u>Weaving</u>	<u>Spinning</u>	<u>Dyeing</u>
May	Apr	Sandy Hutton		
June	May	Doreen McLaughlin		

## *Hospitality*

Please BYOM! – 'bring your own mug' to guild meetings! (We will still have Styrofoam mugs available for guests.) We are also asking all to help with clean up *before* the program starts. Note there is only one person signed up for treats for the January meeting – we would like to have 1 or 2 more. if you can help, please contact Maria (at 392-2007) or Pam (at [pj72@q.com](mailto:pj72@q.com) or 531-5334). Thanks!

**Apr 2010** - Judy Gearhart, Catie Kiley, Ellen Alderson

**May 2010** - Sandy Hutton

# PPWG Calendar

The Pikes Peak Weavers' Guild meets the second Friday of each month from September through May at the [Mountain View Church of Christ](#), 1080 E. LaSalle St at Paseo in Colorado Springs, CO. Come for coffee, socializing and library time at 9:00 am.

The business meeting starts at 9:30 and the program begins by 11 AM.

## Meetings and Events for 2010

- 31 Mar 2010** Celia Quinn evening program on spindles
- 9 Apr 2010** Making Garments with Handwovens
- 7 May 2010** PPWG Book Sale; End-of-year luncheon
- 15 May 2010** Colorado Weavers Day in Boulder
- 18-21 Jul 2010** Complex Weavers Seminar
- 18-25 Jul 2010** HGA Convergence in Albuquerque, NM
- 10 Sep 2010**
- 8 Oct 2010**
- 12 Nov 2010**
- 10 Dec 2010** Holiday Luncheon

### Officers:

President	Susan Bowman
1st Vice President	Weldon Walker
2nd Vice President	Ellen Alderson
Treasurer	Emily Jones
Recording Secretary	Deb Greer
Membership Secretary	Dottie Weir
Past President	Linda Shaffer

### For Sale

NILUS LECLERC, 4 harness loom, 36 inches. Handles anything from fine weaving to rugs; folds to 25 inches to save space. Like new, two reeds, many extras, \$800 (this loom new would be \$2,575).

### Estate Sale

BABY WOLF, 4 harness loom, with Stroller. Excellent working order, some minor wear, \$850 (this loom new would be \$1,556).

SCHACT TABLE LOOM, 4 harness, 20 inches, excellent condition, \$375 (this loom new would be \$659).

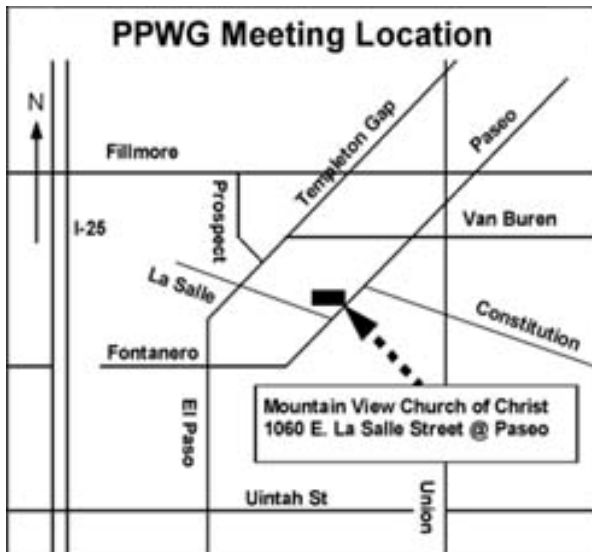
GLIMAKRA, Standard horizontal countermarch, 47 inches, with bench. Needs some parts (lost in transfer of estate). Parts readily available and total \$680. Very nice condition, some normal wear. Selling for \$950 (you would add \$680 for parts and elbow grease to total \$1,630). This loom new would be \$4,100.

For photos and details, contact Anita Deen in Littleton at (303) 548-2276 or e-mail at

[deen.family@mac.com](mailto:deen.family@mac.com)

### Standing Committee Chairpersons:

Advertising	Cozy Swickard
Demonstrations	Barb Byerly, Beth Garrison
Announcements and Yearbook	Marisa McMillen
Hospitality	Pam James, Maria Robinson
Library	Anne Vickrey Evans, Debra Scott
Newsletter	Doreen McLaughlin
Publicity	Deb Lane
Samples	Robin Wilton
Website	Jane Rock
2010 Workshop	Heidi Bates



# Gypsy Wools

FIRST ANNIVERSARY SALE  
MAY 14 - 15

**20% OFF**  
ALL REGULARLY PRICED  
YARNS & FIBERS

EXTENDED HOURS BOTH DAYS 10-7

303-442-1884 info@gypsywools.com  
1227 Spruce Boulder, CO 80302  
Normal Business Hours:  
Mon. 12-6 Tues. - Fri. 10-6 Sat. 10-5  
www.gypsywools.com



518 Wilcox Street, Castle Rock, CO80104  
(303) 660-6684 [WWW.everythingalpaca.biz](http://WWW.everythingalpaca.biz)  
Hours: Tues.-Sat 10 a.m. to 6p.m.

Alpaca Yarn, including designer yarn from Colorado Ranches, Natural Alpaca Roving, Dyed Roving, knitting Needles, Knitting Looms Felting Supplies, Books. Other items at the store include Jewelry, women's footwear, wood furniture, and other unique items offered by Colorado artisans.  
Offering classes in fiber arts (Knitting, Crocheting, felting etc. Call or check website for details.)

## Green Valley Weavers & Knitters

*Knitting • Weaving • Spinning  
Dyeing • Crochet*

*Classes • Study Groups*

*Books • Dyes • Fiber • Knitting Needles  
Looms • Spinning Wheels • Yarns*

Hours: Tuesday 10-7, Wednesday-Friday 10-5, Saturday 9-4

2115 W. Colorado Ave.  
Colorado Springs, CO 80904

**719-448-9963**  
www.greenvalleyweavers.com

### APRIL at Green Valley!

WEAVING BOOT CAMP with Deborah Lane: wind the warp and dress the loom, weave the scarf and learn about finishing methods. \$105.00 APRIL 24/25; 9:00AM-4:00PM

COTTON SPINNING with Sharon Dalrymple: explore different forms of cotton while using the long draw drafting technique. \$30.00 MAY 5, Wednesday 12:30-3:30PM

AFTER 5 WEAVING STUDY GROUP - 1st Wednesday 5:30PM

NAVAJO WEAVING STUDY GROUP - 4th Thursday 5:00PM

THE SHOP will be CLOSED APRIL 4 - 12 for new carpeting.  
Sorry for any inconvenience; waited as long as we could.

# Knitter's Kove



SUPPLIES & CLASSES

**Knitting  
Crochet  
Spinning**

**Knitting Groups**  
Wed: 10 -Noon  
Sat: 3-5 pm

**Open: M,W,Th, F 10-5:30  
Tu 10-8, Sat 10-5**

1817-F N. Union  
Colorado Springs, CO  
719.633.8008

Get your fiber fanatic fix here!



&



**the Dye Works**  
A division of TRLFAS

*Table Rock Llamas  
 Fiber Arts Studio, Inc.*

**Create beautiful yarns and  
 fabrics with nature's own palette!**

We have the widest selection of natural dye colors  
 and the highest quality dye extracts and mordants  
 available. Large selection of dye books as well as  
 Jacquard and Gaywool dyes. Plus all your spinning,  
 weaving, knitting/crochet, and felting supply needs.  
 Lots of other books, patterns and classes too.  
 Open Tues thru Fri 105, Sat 10-4.

6520 Shoup Road  
Colorado Springs,  
CO 80908

Phone: 866-495-7747  
[www.tablerockllamas.com](http://www.tablerockllamas.com)

### APRIL AT TRL!

- KNITTING:** Cary Loewen  
 Knit Help, 4/7 & 4/23, 10-12  
 Stashbuster, 4/28, 10-12:30
- FELTING:** Hand Felted Vest,  
 Marlice Van Zandt: 4/3 OR 4/27,  
 10-3
- SPINNING:** Beginning Spinning  
 Sharon Dalrymple: 4/16 & 4/23,  
 12:30-3  
 Kirsten Maier: 4/24, 12:30-4
- WEAVING:** Deb Greer  
 Bag on a Box, 4/9 & 4/10, 10-4  
 Baskets, 4/24 10-4
- DYEING:** Skein Painting, Donna  
 Brown: 4/20, 10-3
- CROCHET:** Kirsten Maier  
 Crochet Help, 4/15, 10-12  
 Beginning Crochet, 4/21, 10-2  
 Socks, 4/22 & 4/29, 12-2

**Deadline For Next Issue:** 20 April

**Advertising Rates:**

Business card	\$10.00
¼ page	\$15.00
½ page	\$20.00
Full page	\$30.00

**Classified Ads:**

\$5.00 for 25 words  
25 cents each additional word

The PPWG newsletter is published from September through June. To place an ad in the newsletter, we must receive your check or money order by mail (P.O. Box 8104 Colorado Springs CO 80933-8104) and your ad in *digital or electronic format* <editor@pikespeakweavers.org> on or before the 20th of April.

**SHUTTLES**

**APRIL SPECIAL!!**  
**ALL MILL ENDS AND**  
**SPECIAL PURCHASE YARNS**  
**15% OFF!!**

**SPINDLES & SKEINS**  
635 S. Broadway, Table Mesa Center  
Boulder, Colorado  
(303) 494-1071 · (800) 283-4163  
Mon Noon - 6pm    Tue - Sat 10am - 6pm

PPWG  
PO Box 8104  
Colorado Springs, CO 80933-8104